

AI-Powered People counter

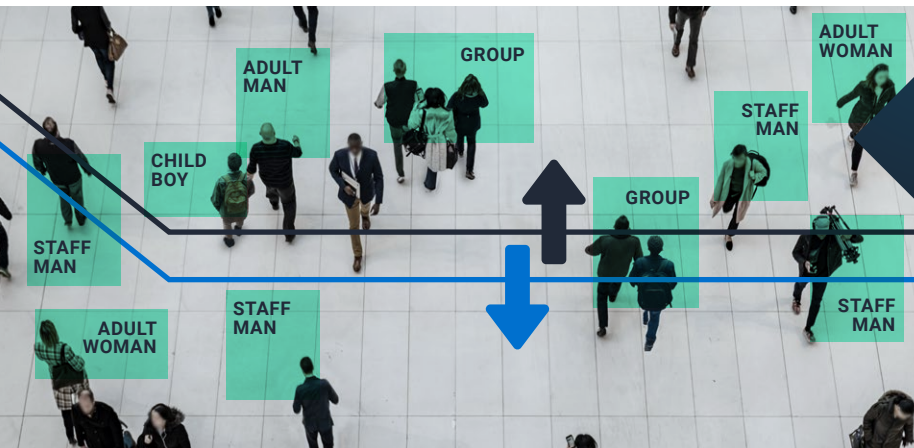
ANALYTICS SOLUTIONS



Accurate. Reliable. Actionable.

These are the words that should describe your counting solution.

Our AI-powered people counter offers the highest accuracy for counting at the entrance, in an area or throughout a complete building. The counter distinguishes adults, children, women, men, families, and even employees, allowing you to categorize your clientele.



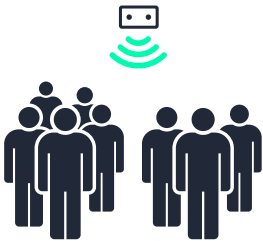
Real-time remote site view to configure counting lines and validate count accuracy.

IN: 197
OUT: 158

An all-in-one tool for optimized management

GROUP COUNTING

The counter can identify couples and families, making it easier to group them as a single buyer.



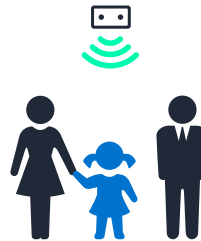
GENDER

Knowing your customer profile allows you to target your marketing efforts with precision and tailor your offerings to your clients' specific needs.



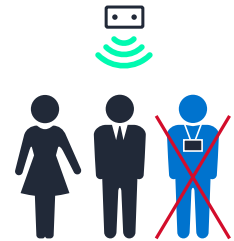
ADULTS & CHILDREN

Refine your key performance indicators (KPIs) by excluding data related to children.



STAFF EXCLUSION

The technology allows staff to be excluded from the count, thereby increasing data accuracy.



Would you like to know more about our occupancy sensor solutions?

Contact us, we will be happy to answer your questions.

1-866-658-2360 • info@axper.com • axper.com

Technical Data Sheet



GENERAL DESCRIPTION	
TECHNOLOGY	3D stereo vision / Edge computing with artificial intelligence (AI)
ENVIRONMENT	Indoor or outdoor
DATA STORAGE	Up to 3 years
DATA PRIVACY	4 privacy modes / data is only transmitted in text format and without any kind of personally identifiable information
INTEGRATION	API with Swagger documentation, data transmissions, remote device health management tool

ELECTRICAL CHARACTERISTICS		ENVIRONMENTAL CONDITIONS	
POWER SUPPLY	Power over Ethernet, Class 0 (IEEE 802.3af, nominal 48V)	REQUIRED ILLUMINATION	Minimum 2 lux
POWER CONSUMPTION	Maximum 6.0 W, 0.125A	OPERATING TEMPERATURE	0 °C to +45 °C / +32 °F to +113 °F

PHYSICAL INTERFACES	
ETHERNET	IEEE 802.3ab 1000Base-T (Gigabit Ethernet)
CONNECTOR	RJ 45
CABLE	Up to 100 m / 328 ft, min. Cat-5e (shielded) or higher
PoE POWER SOURCE	Use power supplies compliant with all locally applicable safety standards

NETWORK INTERFACES		MECHANICAL CHARACTERISTICS	
SUPPORTED PROTOCOLS	IPv6, IPv4, DHCP, HTTPS and password-protected configuration access	WEIGHT (INCL. COVER)	300 g / 0.66 lb
DATA PUSH	HTTP(S) FTP(S) SFTP MQTT(S) TCP UDP	WEIGHT (WITHOUT COVER)	250 g / 0.55
		DIMENSIONS (L x W x H)	Without plastic cover: 12.76 x 8.89 x 3.16 cm / 5.02 x 3.50 x 1.24 in With plastic cover: 13.02 x 9.32 x 3.28 cm / 5.13 x 3.67 x 1.29 in

AXPER

Would you like to know more about our solutions?

Contact us, we will be happy to answer your questions.

1 866 658-2360 • info@axper.com • axper.com



- Innovators in retail traffic counting and performance management solutions since 2005
- Over 30,000 systems deployed worldwide
- Unique approach in the industry through best-in class client relationship